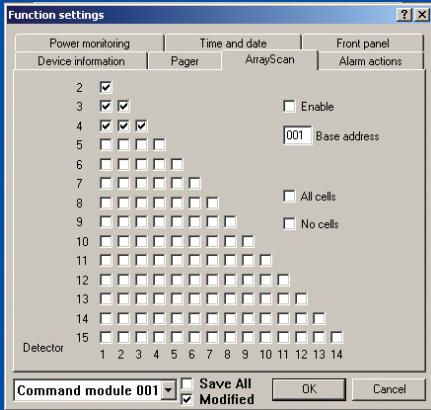


AirSense Technology is proud to introduce the world's first 'Virtual smoke detector'.

Our developments in aspirating smoke detector signalling architecture have enabled us to perfect and patent a revolutionary cross-matrix system to provide fully localised detection with relatively few physical detection units. This provides the substantial advantage of very high sensitivity and a high number of unique addresses at minimal cost.

The principle of operation is that sampling pipes are routed from multiple detectors to a multitude of 'crossover' points. Each crossover point has a unique detector address and is treated as if it were a separate device, having multiple alarm thresholds, smoke level bargraphs, address, etc.



Simple setup

For further information, contact the market leader...



AirSense Technology Ltd
 71 Knowl Piece • Wilbury Way
 Hitchin • Hertfordshire SG4 0TY • UK
 Tel: (+44) (0)1462 440666
 Fax: (+44) (0)1462 440888
 e-mail: sales@airsense.co.uk
 www.airsensetechnology.com



The intelligent choice for aspirating smoke detection

Major breakthrough!

Introducing the world's first virtual smoke detector



MatrixScan™

Virtual detector matrix system

